

This Page Is Inserted by IFW Operations
and is not a part of the Official Record

BEST AVAILABLE IMAGES

Defective images within this document are accurate representations of the original documents submitted by the applicant.

Defects in the images may include (but are not limited to):

- BLACK BORDERS
- TEXT CUT OFF AT TOP, BOTTOM OR SIDES
- FADED TEXT
- ILLEGIBLE TEXT
- SKEWED/SLANTED IMAGES
- COLORED PHOTOS
- BLACK OR VERY BLACK AND WHITE DARK PHOTOS
- GRAY SCALE DOCUMENTS

IMAGES ARE BEST AVAILABLE COPY.

**As rescanning documents *will not* correct images,
please do not report the images to the
Image Problem Mailbox.**

Ricinoleic

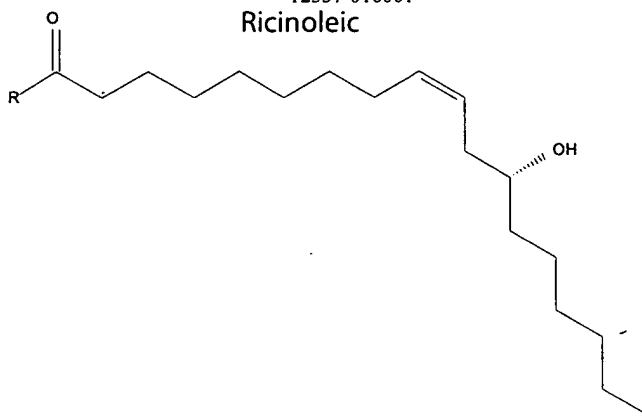
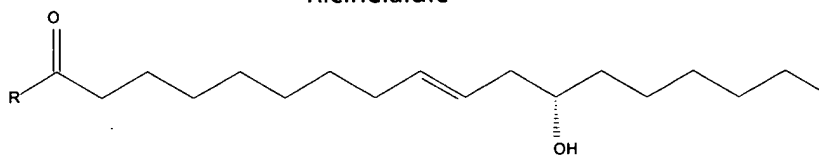
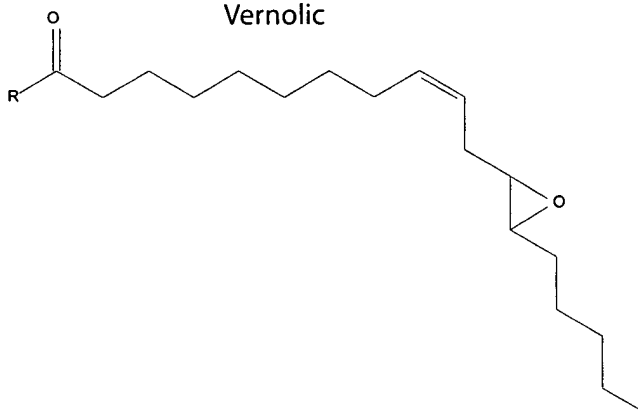


FIG. 1

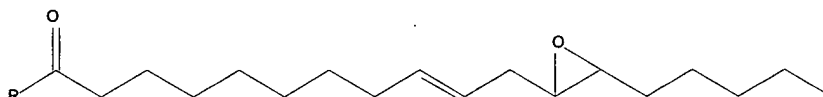
Ricinelaidic



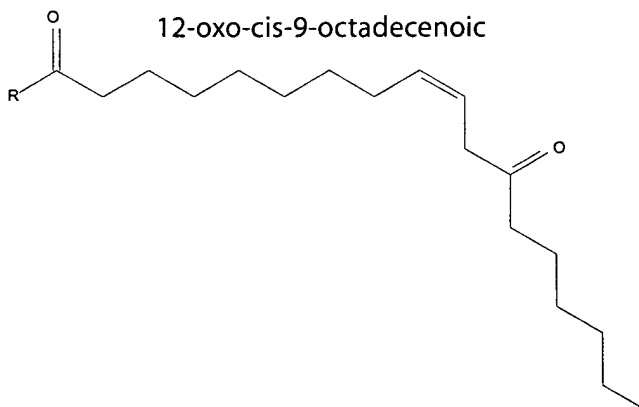
Vernolic



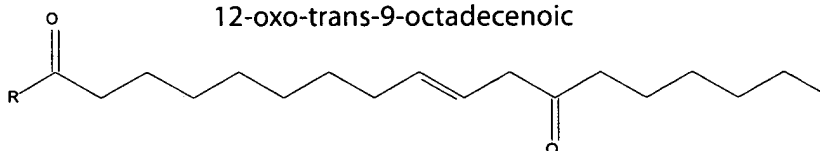
12,13-epoxy-trans-9-octadecenoic



12-oxo-cis-9-octadecenoic



12-oxo-trans-9-octadecenoic




```

:****: :****:*.:* ****:..** **::: ***** ** ..*: :**** * ** *::****:****: * ****:*.:
SEQ_ID_NO_37 DWLRGAMVTVDRDYGVLNKVFHNIADTHVAHHLFATVPHYHAMEATKAIKPIMGEYRYDGTFFYKALWREAKECLFVEPDEGAPTQGVFWRNKY 387
SEQ_ID_NO_39 DWLRGAMVTVDRDYGVLNKVFHNIADTHVAHHLFATVPHYHAMEATKAIKPIMGEYRYDGTFFYKALWREAKECLFVEPDEGAPTQGVFWRNKY 387
SEQ_ID_NO_13 DWLRGAMVTVDRDYGVLNKVFHNIADTHVAHHLFATVPHYHAMEATKAIKPIMGEYRYDGTFFYKALWREAKECLFVEPDEGAPTQGVFWRNKY 387
SEQ_ID_NO_34 DWLRGAMVTVDRDYGVLNKVFHNIADTHVAHHLFATVPHYHAMEATKAIKPIMGEYRYDGTFFYKALWREAKECLFVEPDEGAPTQGVFWRNKY 383
SEQ_ID_NO_19 DWLRGAMVTVDRDYGVLNKVFHNIADTHVAHHLFATVPHYHAMEATKAIKPIMGEYRYDGTFFYKALWREAKECLFVEPDEGAPTQGVFWRNKY 383
SEQ_ID_NO_127 DWLRGALATVDRDYGILNKVFHNIADTHVAHHLFSTMPHYHAMEATKAIKPILGEYRYDGTFFVKAMWREAKECLYVEPDQSTESKGVFWRNKY 383
SEQ_ID_NO_128 DWLRGALATVDRDYGILNKVFHNIADTHVAHHLFSTMPHYHAMEATKAIKPILGEYRYDGTFFVKAMWREAKECLYVEPDQSTESKGVFWRNKY 383
SEQ_ID_NO_17 EWIRGALVTVDRDYGILNKVFHNIADTHVAHHLFATIPHYNAMEATEAIAKPILDYHFDGTWPYVAMYREAKECLYVEPDTERGKKGVIYNNKL 384
SEQ_ID_NO_35 EWIRGALVTVDRDYGILNKVFHNIADTHVAHHLFATIPHYNAMEATEAIAKPILDYHFDGTWPYVAMYREAKECLYVEPDTERGKKGVIYNNKL 383
SEQ_ID_NO_40 EWIRGALVTVDRDYGILNKVFHNIADTHVAHHLFATIPHYNAMEATEAIAKPILDYHFDGTWPYVAMYREAKECLYVEPDTERGKKGVIYNNKL 384
SEQ_ID_NO_14 EWIRGALVTVDRDYGILNKVFHNIADTHVAHHLFATIPHYNAMEATEAIAKPILDYHFDGTWPYVAMYREAKECLYVEPDTERGKKGVIYNNKL 384
SEQ_ID_NO_20 EWIRGALVTVDRDYGILNKVFHNIADTHVAHHLFATIPHYNAMEATEAIAKPILDYHFDGTWPYVAMYREAKECLYVEPDTERGKKGVIYNNKL 384
SEQ_ID_NO_23 EWIRGALVTVDRDYGILNKVFHNIADTHVAHHLFATIPHYNAMEATEAIAKPILDYHFDGTWPYVAMYREAKECLYVEPDTERGKKGVIYNNKL 384
SEQ_ID_NO_15 DWIRGAMVTVDRDYGILNKVFHNIADTHVAHHLFATIPHYNAMEATEAIAKPILDYHFDGTWPYVAMYREAKECLYVEPDTERGKKGVIYNNKL 383
SEQ_ID_NO_21 DWIRGAMVTVDRDYGILNKVFHNIADTHVAHHLFATIPHYNAMEATEAIAKPILDYHFDGTWPYVAMYREAKECLYVEPDTERGKKGVIYNNKL 383
SEQ_ID_NO_16 EWIRGALVTVDRDYGILNKVFHNIADTHVAHHLFATIPHYNAMEATEAIAKPILDYHFDGTWPYVAMYREAKECLYVEPDTERGKKGVIYNNKL 384
SEQ_ID_NO_22 EWIRGALVTVDRDYGILNKVFHNIADTHVAHHLFATIPHYNAMEATEAIAKPILDYHFDGTWPYVAMYREAKECLYVEPDTERGKKGVIYNNKL 384
SEQ_ID_NO_125 DWLRGALATVDRDYGILNKVFHNIADTHVAHHLFSTMPHYNAMEATEAIAKPILDYHFDGTWPYVAMYREAKECLYVEPDREGEKKGVIYNNKL 383
SEQ_ID_NO_126 DWLRGALATVDRDYGILNKVFHNIADTHVAHHLFSTMPHYNAMEATEAIAKPILDYHFDGTWPYVAMYREAKECLYVEPDREGEKKGVIYNNKL 384
SEQ_ID_NO_18 NWIRGALSADRDPGFMSVFDVTHVHMHMFSYIPHYHAKAARDAINTIIGDYIMIDRTPILKALWREAKECMYIEPD--SKRKGVIYWHKL- 374
SEQ_ID_NO_41 NWIRGALSADRDPGFMSVFDVTHVHMHMFSYIPHYHAKAARDAINTIIGDYIMIDRTPILKALWREAKECMYIEPD--SKRKGVIYWHKL- 374
SEQ_ID_NO_24 NWIRGALSADRDPGFMSVFDVTHVHMHMFSYIPHYHAKAARDAINTIIGDYIMIDRTPILKALWREAKECMYIEPD--SKRKGVIYWHKL- 380
SEQ_ID_NO_38 NWIRGALSTIDRDPGFNLRVFHDVTHVHLHLISYIPHYHAKAARDAIKPVLGDYKIDRTPIFKAMWREAKECIYIEPDEDTEHKGVYWHKM- 377
SEQ_ID_NO_42 NWIRGALSTIDRDPGFNLRVFHDVTHVHLHLISYIPHYHAKAARDAIKPVLGDYKIDRTPIFKAMWREAKECIYIEPDEDTEHKGVYWHKM- 377
SEQ_ID_NO_36 NWIRGALSTIDRDPGFNLRVFHDVTHVHLHLISYIPHYHAKAARDAIKPVLGDYKIDRTPIFKAMWREAKECIYIEPDEDTEHKGVYWHKM- 377
ruler .....300.....310.....320.....330.....340.....350.....360.....370.....380.....390

```

FIG. 2-2

Expression Constructs

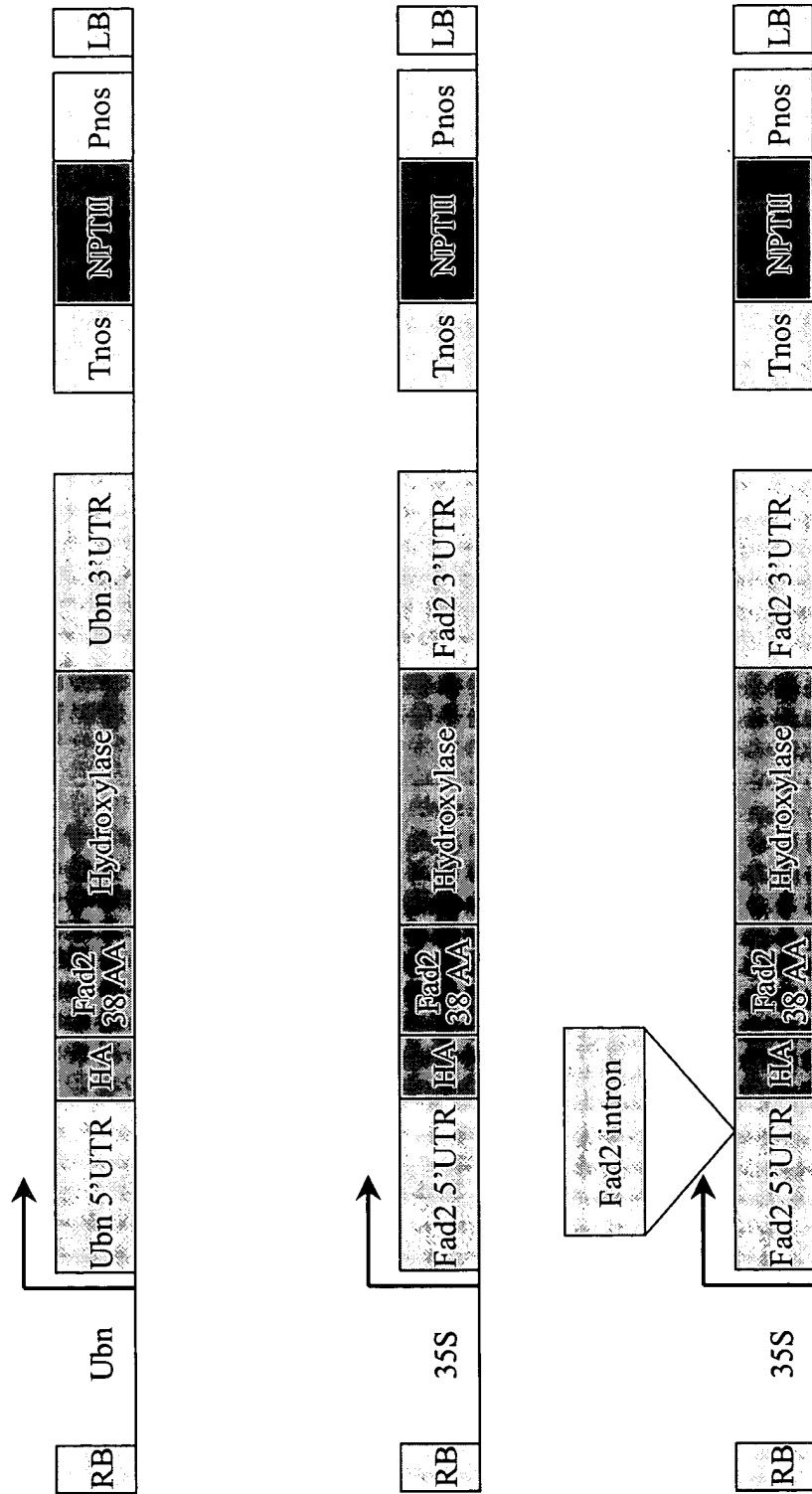


FIG. 3

FIG. 4

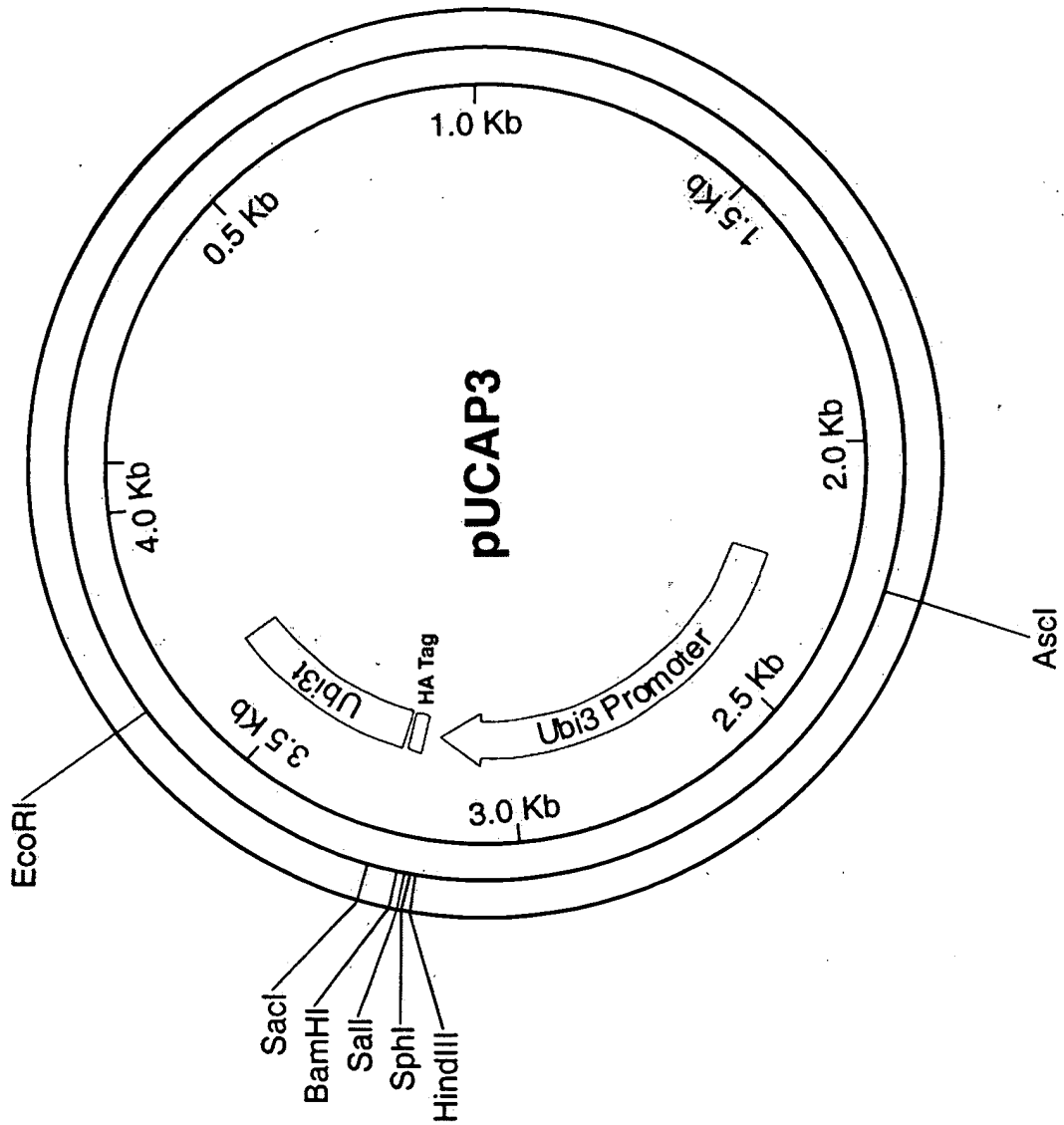


FIG. 5

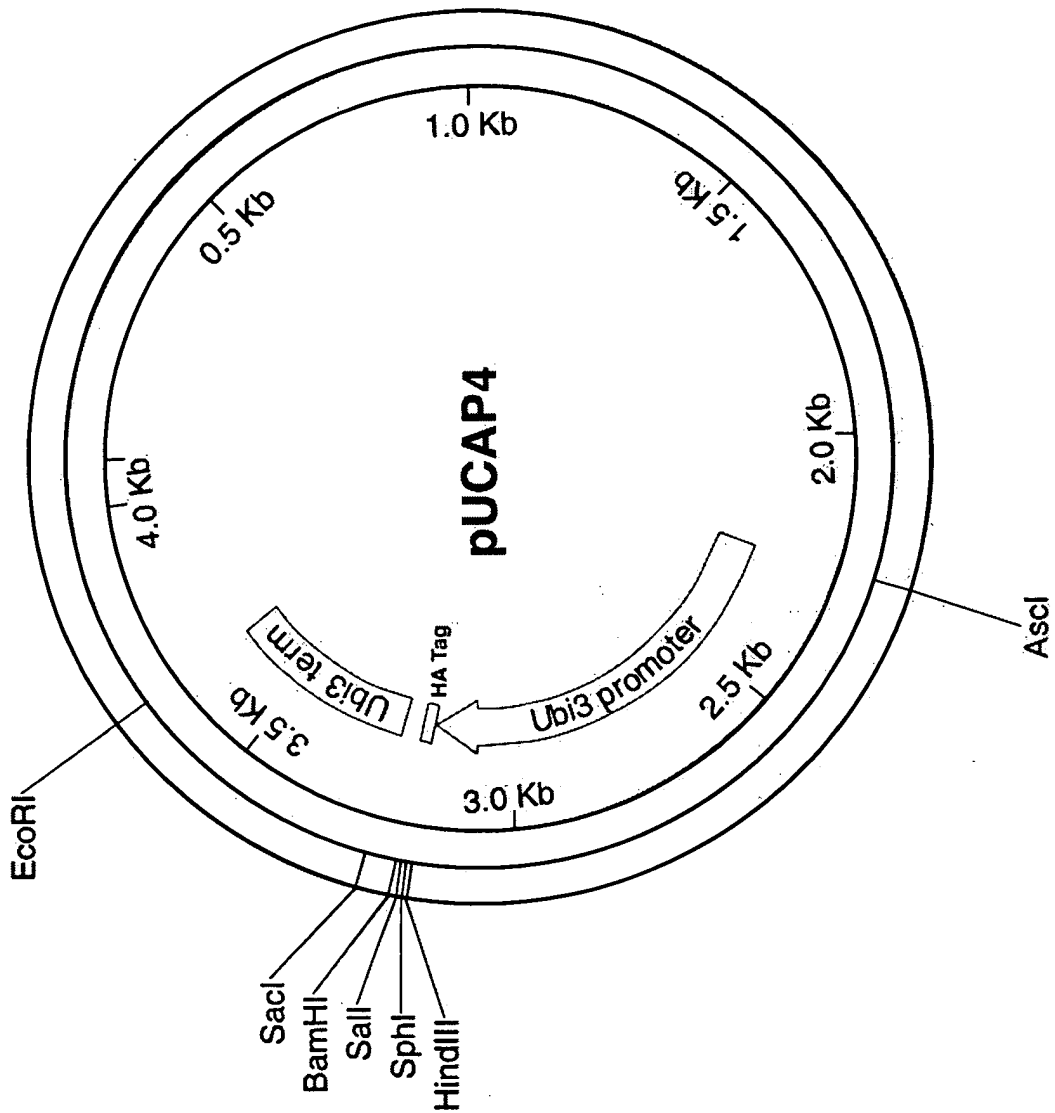


FIG. 6

